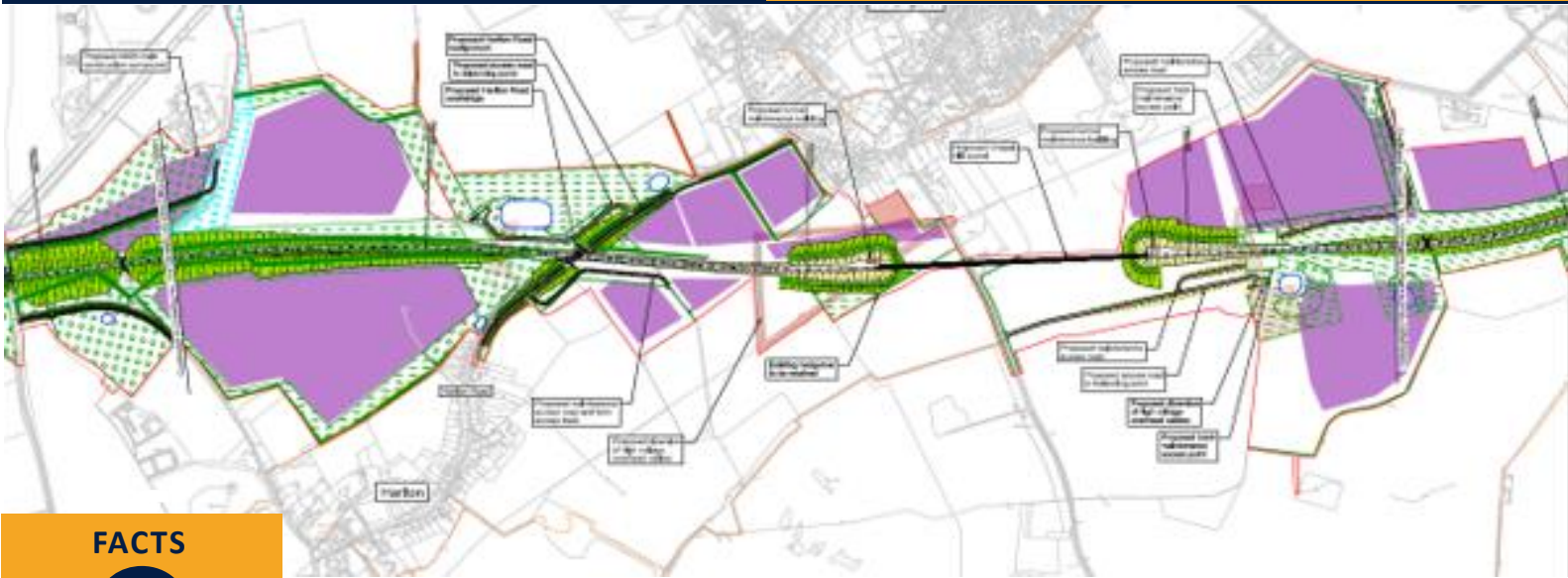


Harlton Parish Council

Invite you to a meeting on Tuesday 7th January
The railway is the biggest issue to affect our village in decades



FACTS



EWR

Your Say Matters

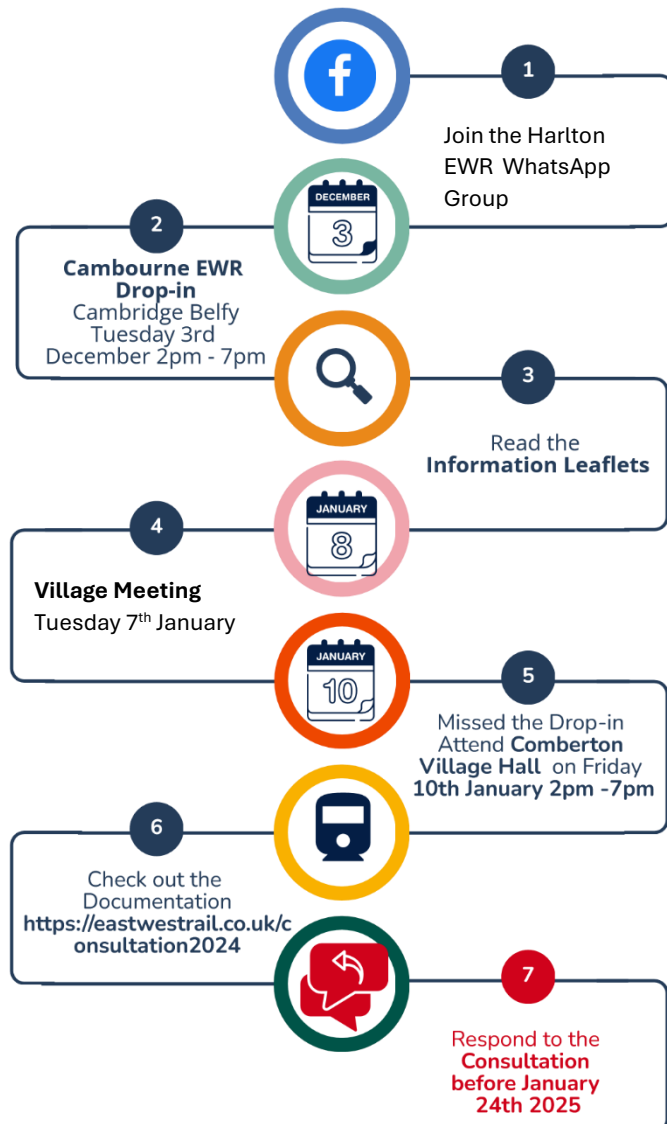
What Happens Next?

We are now in another period of non-statutory consultation with more details released about the East West Rail proposal

We, along with Cambridge Approaches, are delving into the technical documents and researching more facts to bring to you before the end of the consultation period on **24th January** to help you respond to the consultation

We will highlight the details from EWR affecting Harlton and those they aren't telling you

This is our chance before the Statutory Consultation which details EWR plans before they apply for funding



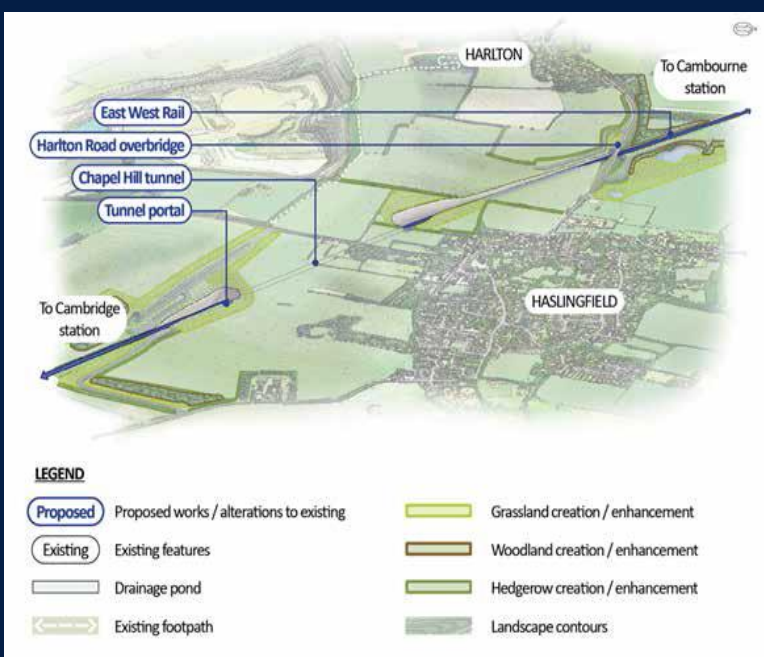
What is proposed for Harlton?

The railway crosses over the A603 from Eversden to Harlton on a viaduct and continues on an embankment at approximately 11m (33ft). It tapers from there to ground level where it crosses the Harlton to Haslingfield Road and under a new bridge before it reaches a tunnel that will be bored through Chapel Hill to Harston.

Much of Harlton land will be taken by EWR (purple areas) during construction. There will be huge earthworks, mineral stores, construction buildings and machinery. If it goes ahead clearing work will start in 2028 and finish, if no delays, 7 years later.

Sign up to the WhatsApp “Multi Village EWR WG”

- Construction work will be 400 metres wide, cutting its way across the back of Harlton
- The road between Harlton and Haslingfield will separate residents and businesses, disrupt school runs, trips to the doctor and the local shop
- Bus services will likely be delayed and re-routed
- Mess, noise, diverted roads and constant engineering works over the period of 7 years (more if there are delays)
- This is a vast improvement upon the originally proposed embankment, but it will be a huge disruption to daily life that will affect everyone no matter where you live in the village
- Difficult to sell homes



Come to the Village Meeting in the Village Hall

7pm on Tuesday 7th January 2025

Agenda

- Introduction - Ben Banks (Chair of Parish Council)
- What you will see tonight so you can make your own mind up – David Lean
- The LRG’s and GCP Input - Isabel Robinson (Parish Councillor)
- Explanation of the route and likely mitigations we can ask for - Tom Lindley
- High level options for consultation response (Harlton perspective) – Phillip Phan
- How to respond to the consultation – David Lean
- Questions and close – Ben Banks